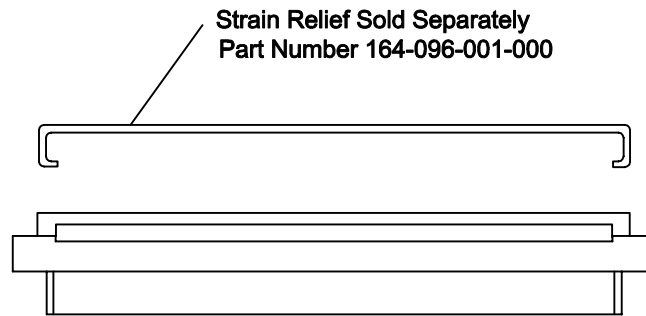
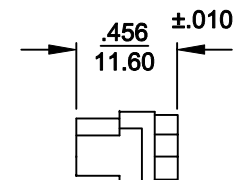
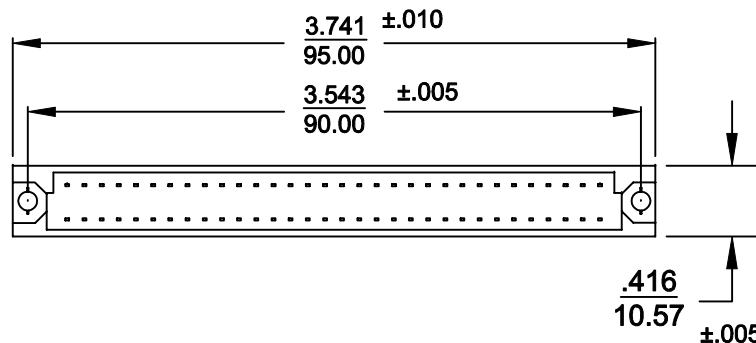


DESCRIPTION: 64 PIN DIN FEMALE DIP SOLDER



689-096-290-001

096 = ROWS A AND C ONLY



Materials:


Insulator: Glass-Filled PBT U.L. rated 94V-0

Contacts: Cu Alloy, Double Spring Hardened

Electricals:

Current Rating: 1 Amp max for 28 AWG , 1.5Amp max. for 26 AWG

Operating Temperature: -40°C to +145°C

	THESE DRAWINGS AND SPECIFICATIONS ARE THE PROPERTY OF NorComp AND SHALL NOT BE REPRODUCED, COPIED OR USED AS THE BASIS FOR THE MANUFACTURE OF SALE OF APPARATUS WITHOUT WRITTEN PERMISSION.		DRAWN: WAYNE ROBBINS	DATE: 10-19-98
				CHECKED:
NorComp		SCALE: 1:1	SHEET 1 OF 1	REV 1
		DWG NO. 689-XXX-290-001		